

NEWSLETTER



A word or two from the Chairman...

Unfortunately, I have to start my Chairman's update with several pieces of sad news, recently, we lost our President Alan Birbeck, Alan has done much over the years to support and promote the Swaledale breed. He was already ill at the time he became president and so never got to enjoy any of his time as President. Also, Arthur Carter, past E District Secretary for 27 years, passed away at the beginning of the year after a long illness. Our thoughts and condolences go to both families. We were also shocked and saddened to hear of the tragic death of Hannah Brown, Hannah was a talented and well-known stocks person involved with several breeds of sheep and cattle, and a familiar face at local and national shows and sales. She had only recently become a member of the SSBA and was the partner of Ben Richardson of Ghyll House, our thoughts and condolences go to Ben and all her family and friends.

Since the last newsletter much has changed, we left the EU completely but at the last minute a deal was done which thankfully did mean there was no imposition of tariffs on lamb sold into the EU. The lamb price has remained very strong right through Autumn and Winter. In a bizarre way it appears the lockdown has in some ways helped the sale of lamb as people are unable to visit restaurants and are cooking more at home with a preference for British meat.

The M&S lamb scheme continues to run very well and highlights the demand for a quality product. The Swaledale scheme is the only specialist lamb scheme that is breed specific for M&S.

The Swaledale in lamb ewe sales went very well considering the Covid restrictions in place, thanks must go to the auction companies for continuing to run sales as smoothly as possible in difficult times and to those breeders who supported the sales as both sellers and buyers.

At the time of writing the vaccine roll out seems to be going very well but unfortunately, we are going to again lose Spring shows and also some of the big shows have either cancelled or are running very limited or virtual classes. It struck me the other day that the showing life of a sheep is usually pretty short and there will be some very good sheep out there who will have missed their opportunity for success. We must hope that some of the later Summer and Autumn shows can go ahead and that there are no further twists or glitches with Covid mutations. Hopefully we will see a return to at least a more normal situation for the Autumn breeding and ram sales.

A worrying situation is arising with regards to environmental schemes and roll over of existing schemes, Natural England seem to be taking a hard-line view in the North and are still looking for major sheep number reductions. We have been made aware of one area where they want

total removal of sheep. We have signed a joint letter along with other breed societies and commons groups which has been sent to a range of MPs of all parties including Rishi Sunak the Chancellor, Tim Farron as Chair of the All Party Group on Hill Farming and Neil Parrish Chair of Environment and Rural Affairs Select Committee.

Finally, I would like to thank Rachel and the District secretaries for their hard work, Council members and everyone who has helped in any way to support and promote the Swaledale breed. Let's hope the weather is kind and that members have a successful lambing season.

Will Cockbain

**Alan Birbeck
Association
President 2021**



Secretary's Report



2021 is feeling more positive, at the time of writing over 50% of the Country have had their first vaccination in the prevention of Covid-19. Who would have thought 12 months ago that we would be where we are now, but on a brighter note, agriculture and in particular, sheep trade, both breeding and primestock, is in a buoyant position.

In-lamb Sales - Numbers entered versus numbers forward at the inlamb sales told two different stories, with very wintry weather and ongoing Covid concerns preventing some from attending. Despite this, those who attended, experienced a great trade and reflected commitment to the breed.

Northern and Southern Ireland - On 1st January 2021, the Country entered a new era of Brexit, and in turn, new legislation came into force affecting how stock can travel from England, Scotland and Wales, into Northern Ireland, where more stringent border controls came into effect. Interest in the breed in Northern and Southern Ireland is very encouraging with 40 members in the South and 20 members in the North. Members in the South have confirmed a sale at Ballybofey and Stranorlar Mart on Friday 17th September for registered males and females, hopefully this will lead to being a flagship event for the breed.

Facebook - At the moment, the Association Facebook page has approximately 5,500 followers, which is a great achievement and confirms the popularity of the breed. Both D and E Districts have their own pages, and in the South of Ireland, Carol Gillespie has launched their page, whilst, Richard Patrick has agreed to administrate a page in Northern Ireland. Please like and share our posts, this form of promotion of the breed is the most economical method and benefits all.

Website - Work is ongoing with the website, new pages are being introduced for merchandise, resources for members and commercial, which will include information on live primestock sales and the M&S Lamb Scheme. A small range of promotional clothing has been selected, all orders are individual, and no

stock is kept, however, Claire Smithson, from Kirkby Stephen www.cottoneyesew.co.uk provides an excellent service and will embroider and personalise your items with the Association logo.

Shows - Fingers crossed, some shows are planning to proceed, from the end of June onwards. The decision to hold these events in uncertain times is a brave one, so if these shows are local to you, please support the classes; with an absence for over a year, these are great platforms to promote your stock, and my thanks go to you all in advance.

Crowning and Sales - 2020 crowning took place in a different format, with members applying for tags and 'self-crowning'. No decision has been made regarding 2021, this will be discussed at the earliest opportunity by Council and members will be informed. The Autumn tup sale dates are listed within this newsletter, shows at the sales will be subject to Government legislation and recommendations from the Livestock Auctioneers Association (LAA) to the auction marts. The Association and Districts will be working with the auction marts to ensure these run smoothly once again. At this point, can I remind members to use full EID tag numbers on blood samples when scrapie genotyping shearing rams, this is in the bye-laws of the Association.

All that remains for me to say is to wish you all good luck with lambing time, may the sunshine, the grass grow, and the stars of the future be born.

Kind regards

Rachel



Email Addresses

Please can you email the office with your email addresses – postage is very expensive, and it is hoped that future Newsletters will be emailed to as many members as possible, as well as putting them on the website and Facebook.



Inlamb Sales Reports

Hawes 23rd January 2021

Trade peaked at Hawes at £3400 for a gimmer shearling consigned by A&M Skidmore, Flakebridge. Sired by Oakbank Emerald and out of a Paul Hallam ewe which was by a £52,000 Ewbank, she sold in lamb to the Eric Coates tup, Buttrigg Viceroy, to Paul Brown, Oak House, Ravenstonedale.

Leading the aged ewe section was R Hutchinson & Sons, Valley Farm, when they sold a Patrick Sowerby sired 2015 born-ewe, out of an old show ewe by a £10,000 Naby tup, for £2600 to LV&N Croft, Tranmire, Ellingstring. She sold in-lamb to a £20,000 Paul Hallam tup. Also, from Valley Farm, came another 2015-born ewe, which sold for £1,200 to Ivor Allonby, Kirkby Stephen. She was by a £42,000 Patrick Sowerby and out of a ewe by their old Catlow tup, and was in-lamb to a £7,500 Wilf Buckle tup.

The gimmer hogg section was led by Robbie Hallam, High Birkwith. He sold a Ghyll House Jawbreaker daughter for £2,000 to Millie Richardson, Ghyll House.

LEADING PRICES	
Ewes	
R Hutchinson & Son	£2600, £1200
AD Coates & Son	£1000
EC Coates	£900
Average £1425	
Shearlings	
A & M Skidmore	£3400, £500
R Hallam	£1000
AD Coates & Son	£550, £400
AP Keiley	£250
Average £1016.67	
Hoggs	
R Hallam	£2000



A&M Skidmore sold a gimmer shearling for the top price, £3400 to Paul Brown, Ravenstonedale



R Hutchinson & Sons sold an aged ewe for £2600 to LV & N Croft, Ellingstring



Robbie Hallam sold his gimmer hogg for £2000 to Millie Richardson, Ghyll House

J36 30th January 2021

The sale of 'Swaledale Stars' at J36 had a reduced entry this year. The consignment from Andrew Skidmore, Tebay led the way, with a substitute lot sired by Oakbank Emerald and out of a Paul Hallam draft ewe. This Shearling was in lamb to Buttrigg Viceroy selling for 1600gns to Messrs Bainbridge, Owlands.

Others from the same home sold to 1000gns, sired by Brownber Napoleon in lamb to Oakbank Firestorm. The gimmer shearling from TA & J Dixon, Selside sired by Whicham Harkerside and in lamb to the £11,500 Cotegill Upgrade sold for 1100gns. Aged ewes once again from the Skidmores sold to 700gns sired by Wolfcleugh Hercules and in lamb to Flakebridge Justice.



Andrew Skidmore's top priced inlamb sheep at J36 sold for £1600 to Andrew Bainbridge, Owlands

LEADING PRICES (gns)	
A&M Skidmore	1600,1000, 850, 700, 300, 280 (2)
TA&JA Dixon	1100

Inlamb Sales Reports

Bentham 6th February 2021

The Sale peaked at £2600 from Eric Coates, Chapel Garth, for a Bull & Cave sired shearling gimmer carrying twins to Stonesdale Governor, she found a new home with Frank Brennand of Ellerbeck, who also bought a gimmer hogg from the same home sired by Keld-Side Quantum at £1050. An Aygill Natural sired gimmer hogg also from Eric Coates topped the gimmer hogs at £1200 selling to Shaun Taylor.

LEADING PRICES	
A & M Skidmore	£800 (2)
AH Price & Son	£400
DJ Taylor	£280
CE & MI Middleton	£280, £200 (2)
B Thomas	£400, £200
EC Coates	£2600, £1050, £1200

AVERAGES	
Ewes	£320
Shearling Gimmers	£936
Gimmer Hogs	£817



Sale leader from Eric Coates, Chapel Garth, a gimmer shearling which sold for £2600 to Frank Brennand



Eric Coates, Chapel Garth sold two gimmer hogs which sold for £1200 to Shaun Taylor, and £1050 to Frank Brennand

Kirkby Stephen 11th February 2021

The annual sale of Individual Crowned Swaledale Ewes, Shearlings and Gimmer Hogs saw a lead price of £4,700 for a gimmer shearling consigned by Ian Collinson, Billingshield. This Ewbank sired gimmer shearling which was inlamb to a Naby ram was purchased by James Pritchard, Evistones, Rochester.

LEADING PRICES

Gimmer Shearlings

I Collinson	£4700, £3200 £800
D Humble	£2200
PE & KA Sowerby	£1500
TW Hutchinson	£1200, £1000
JH&J Bland	£700

Ewes

PE & KA Sowerby	£4400, £3200, £1000, £900
D Humble	£3200
R Hutchinson & Sons	£2000, £1800
M/s J Thompson	£600
JH&J Bland	£500 (2)

Gimmer Hogs

JH&J Bland	£600
------------	------

Next selling for £4400 was a 2-shear ewe sired by Bull & Cave and inlamb to a homebred ram from PE&KA Sowerby, Oakbank Farm, Barras which sold to Eddie Haughey, Ballymena, Northern Ireland.

The £3200 mark was reached on three different occasions, firstly for a 3-shear ewe from Dan Humble, Weardale, sired by a homebred ram and inlamb to a Stoneyhill ram she sold to James Pritchard, making this his second purchase on the night.

Ian Collinson, Billing Shield Farm, Eastgate was next to make £3200 this time for a gimmer shearling, again sired by a Bull & Cave ram, inlamb to a Rukin ram. This was followed by a 2-shear ewe from PE&KA Sowerby, Oakbank, sired by a Bull & Cave and inlamb to a homebred ram, this sold to Eddie Haughey, Ballymena, N. Ireland.

Out with the individual sheep two consignments of ewes sold in lots were offered by PE&KA Sowerby, Oakbank and Messrs JH&J Bland, Crowden House Farm.

Messrs Sowerby sold a pair of 2 shear ewes to make £900 each selling to G Coates, Catterick and Messrs Bland sold a pair of gimmer hogs for £600 each selling to Messrs Haughey, Northern Ireland.

AVERAGES

Individual females	£1900
Shearling Gimmers	£2085.71 (+£953.58 on the year)
Ewes	£1844.44 (+£1010.35 on the year)



Lot 13 from Ian Collinson sold for £4700 to James Pritchard



Lot 22 from PE&KA Sowerby sold for £3400 to Eddie Haughey



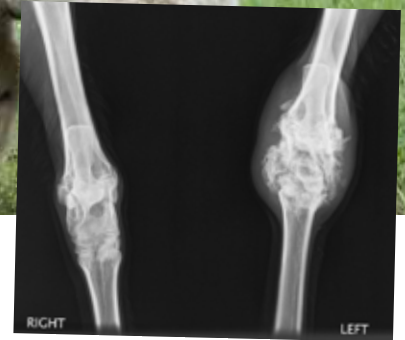
Lot 9 from Dan Humble sold for £3200 to James Pritchard



Lot 12 from Ian Collinson sold for £3200 to Jake Collingwood



Lot 21 from PE&KA Sowerby sold for £3200 to Eddie Haughey



Vets Corner

This time, Karen Swindlehurst from Dalehead Veterinary Group has written about a very topical subject, for lambing time.

JOINT ILL

The topic I end up discussing by far the most at lambing time is Joint Ill, this reflects how challenging it is.

The sources - This picture explains to me why it is so problematic, the bacteria has adapted to infect the lamb through several points of entry and is so widespread in the lambs' environment even surviving in dry straw and the ewes birth canal.

The cause - Well over 90% of joint ill is caused by the bacteria *Strep. Dysgalactiae* (SD). The bacteria attacks the joint and causes bony changes. If you consider this X-ray of a lamb with Joint Ill, the reason for those hobbling lambs that never cure is easily appreciated. Once you can feel a firm swelling on the leg the damage is irreversible and no amount of antibiotics or anti-inflammatory are going to cure the arthritis.

Prevention - Prevention is centred around several factors;

• **Ensuring a good intake of colostrum to maximise lamb immunity**

100mls/kg of ewe colostrum in the first 6 hours of life is ideal.

This is by far the most effective prevention we have in our armoury.

Ewe colostrum is the best source of immunity, followed by cow colostrum with powdered products varying hugely in quality. The best powdered colostrum has half the immunity of ewe colostrum.

• **Preventing the bacteria crossing the navel** - *Dipping 10% Iodine twice in the first few hours is best practice.*

• **Good hygiene at every stage of management. Considerations include:**

- *Clean dry pens, lime or antibacterial powders are useful when completely cleaning out pens and allowing them to dry is not practical.*
- *Clean hands and gloves*
- *Disinfecting lamb tubes, teats, and bottles between lambs*

- *Dipping tags, taggers and castrators in surgical spirit between lambs*
- *Avoiding tagging or injecting if the weather is wet and there is a high risk of contamination.*

• **Preventative antibiotics** - Joint ill differs from other bacterial infections in lambs in terms of how we think about antibiotics in prevention- when would you give even a 2 or 3 day long-acting antibiotic to cover all those points of entry? Blanket antibiotic prevention is not effective and will soon lead to resistance. When we look at the drugs that SD is resistant to, we can see that it is essentially the most commonly used watery mouth prevention drugs. The bacteria has adapted to survive despite the use of these drugs. A research study in 2017 by SAC Veterinary Services revealed

- 88% of isolates were resistant to Oxytetracycline. (*Alamycin, Terramycin, Engemycin*)
- 69% were resistant to Neomycin. (*The active ingredient in lamb oral dosers*)
- 15% were resistant to Tylosin.

The good news is that all isolates were sensitive to ampicillin, amoxicillin and penicillin. This is relevant when we consider treatment.

Treatment - The drug of choice for treatment is therefore a penicillin based one. The bacteria attacks the joint within hours and penetrates deep into the tissues. Early treatment and a long course of antibiotics is essential for success.

Treatment of lambs with joint ill = 7 days of penicillin + anti-inflammatory
Not completing a full course and only giving a couple of injections - until you can't catch the lamb- results in an incomplete cure and the disease flaring up again.

Joint Ill

Caused by *Strep Dysgalactiae* (SD)

SOURCES



Birth Canal, on Teats & in Milk



Stomach Tubes & Bottle Teats

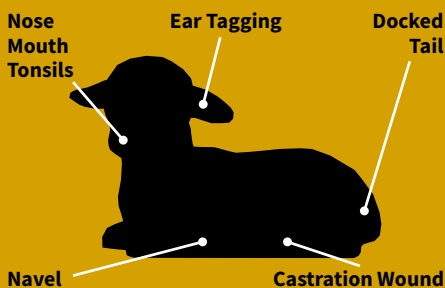


Dirty Hands



SD survives well on dry straw

ROUTES FOR ENTRY



Nose Mouth Tonsils

Ear Tagging

Docked Tail

Navel

Castration Wound

M&S is proud to support the Swaledale Sheep Breeders Association

We firmly believe that good food starts with good ingredients,
and the best ingredients come from the best farmers.

We are extremely proud of the long-term relationships that
we have with our farmers and suppliers, including working
with the Swaledale Sheep Breeders Association to provide
quality meat to our customers. We wish all Swaledale
breeders well in this centenary year.

M&S SELECT
-FOOD- **FARMS**
we know and trust



SWALEDALE SHEEP RAM SALES

2021

E District

Ruswarp

Whitby, North Yorkshire

Friday 8th October

Rams of all ages

D District

St Johns Chapel

Co. Durham

Tuesday 12th October

Rams of all ages

A District

Middleton-in-Teesdale

Co. Durham

Wednesday 13th October

Rams of all ages

C District

Kirkby Stephen

Cumbria

Wednesday 20th October

Aged rams and Ram lambs

C District

Kirkby Stephen

Cumbria

Thursday 21st & Friday 22nd October

Shearling rams

B District

Hawes

North Yorkshire

Wednesday 27th & Thursday 28th October

Shearling rams



DISTRICT CONTACTS

D District

Chairman:
Adam Watson
Sanders Close
Tel: 07766 720423

Secretary:
Fay Johnson
Tel: 07500 800388

C District

Chairman:
Alan Alderson
Barras
Tel: 07817 610320

Secretary:
Wilf Buckle
Tel: 07855 103575

B District

Chairman:
Malcolm Allison
Seal Houses
Tel: 07854 743657

Secretary:
David Alderson
Tel: 01748 886120

A District

Chairman:
David Allinson, West Briscoe
Tel: 07791 069784

Secretary:
Caroline Colling
Tel: 07919 440430

Southern Ireland Contact:
Carol Gillespie
Tel: 00353 86 370 3140

Northern Ireland Facebook:
Richard Patrick
Tel: 07936 902818

E District

Chairman:
Reg Peirson
Friar House Farm
Tel: 07866 050883

Secretary:
Michelle Fawbert
Tel: 07756 767499



Society Contacts

Chairman:
Will Cockbain
Rakefoot Farm
Keswick
Cumbria
CA12 4TE
Tel: 07810 315609

Vice Chairman:
Greg Dalton
South Wellhope Farm
Lanehead
DL13 1AP
Tel: 07546 328241

Head Secretary:
Rachel Buckle
Riddings Farm
Reeth, Richmond
North Yorkshire
DL11 6UR
Tel: 07958 540749